

ENGINEERED TO BE THE BEST DIESEL FUEL FOR THE ROAD AHEAD

Dieselelex[®] Gold

PROTECTS

AGAINST UNPLANNED
DOWNTIME

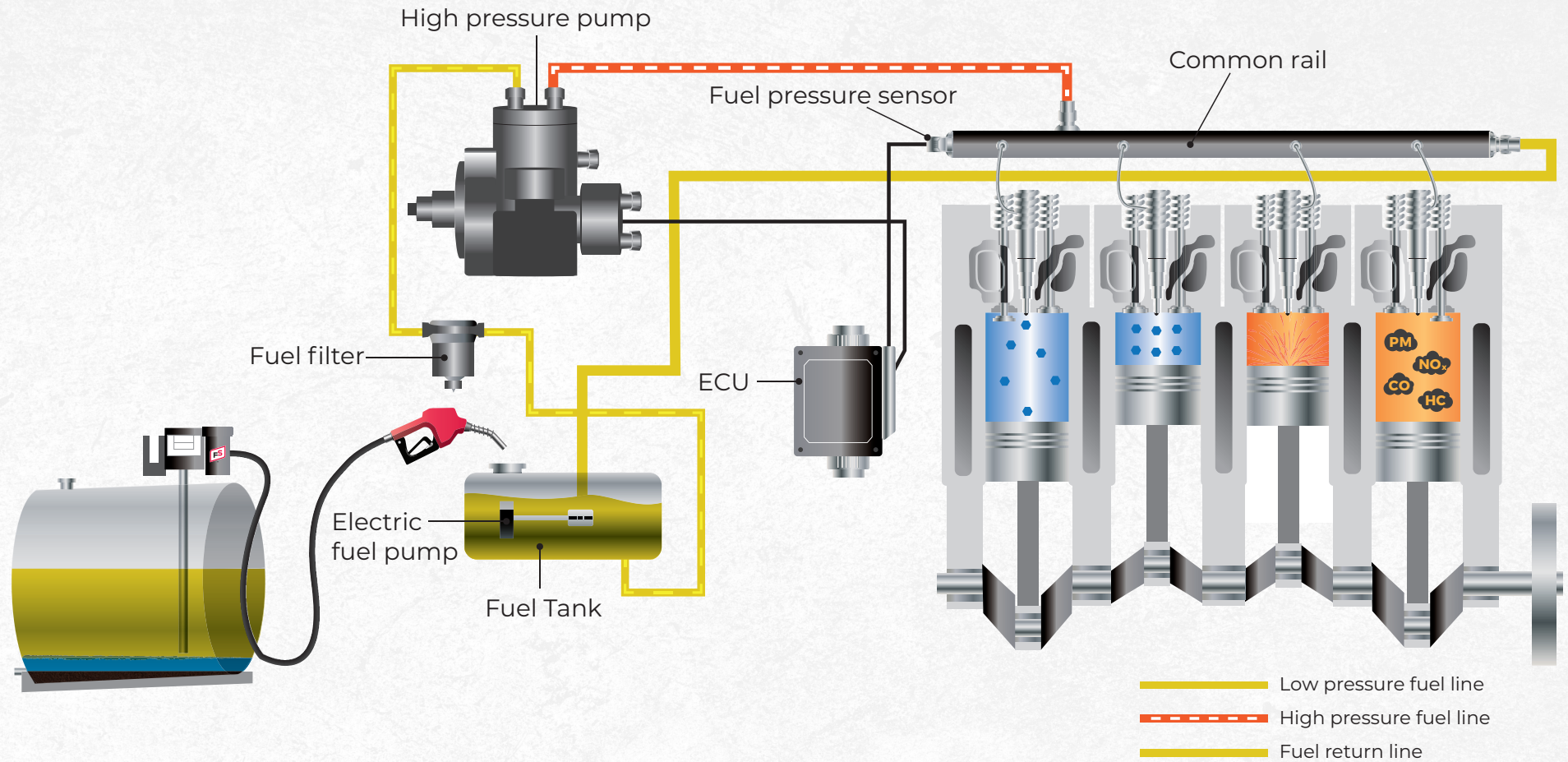
RESTORES

AND INCREASES
LOST HORSEPOWER

IMPROVES

FUEL AND ENGINE
EFFICIENCY

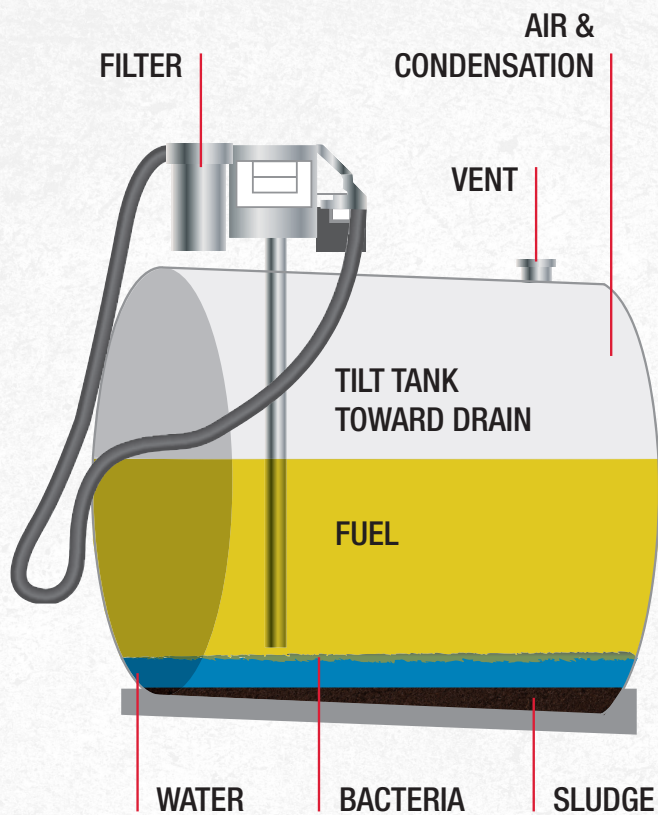
COMMON RAIL DIESEL FUEL INJECTION SYSTEMS



ENGINEERED TO BE THE BEST

Dieselex[®] Gold

BULK STORAGE TANKS



BULK STORAGE TANK CHALLENGES

Condensation
Free Water
Corrosion
Particles
Bacteria
Sludge
Fuel Stability

DIESELEX GOLD STORAGE TANK BENEFITS

Control of condensation
Keeps tanks dryer
Enhanced corrosion resistance
Dispersion of particles
Less chance of bacteria
Less chance of sludge
Improved fuel stability

ENGINEERED TO BE THE BEST

Dieselelex[®] Gold

TANK FILTERS



TANK FILTERS CHALLENGES

Fuel cleanliness

Limiting particles

Biodiesel blends

Relatively low cost

DIESELEX GOLD TANK FILTER BENEFITS

Extends filter life

Controlling condensation

Dispersing particles

Improved fuel and biodiesel stability



ENGINEERED TO BE THE BEST

Dieselex[®] Gold

EQUIPMENT AND TRANSFER TANKS



EQUIPMENT / TRANSFER TANK CHALLENGES

Condensation

Free Water

Corrosion

Particles

Bacteria

Sludge

Fuel Stability

DIESELEX GOLD BENEFITS

Control of condensation

Keeps tanks dryer

Enhanced corrosion resistance

Dispersion of particles

Less chance of bacteria

Less chance of sludge

Improved fuel stability



ENGINEERED TO BE THE BEST

Dieselelex[®] Gold

ON BOARD FILTERS



ON BOARD FILTER CHALLENGES

Fuel cleanliness

Expensive

Fuel cleanliness

Limiting particles

Biodiesel Blends

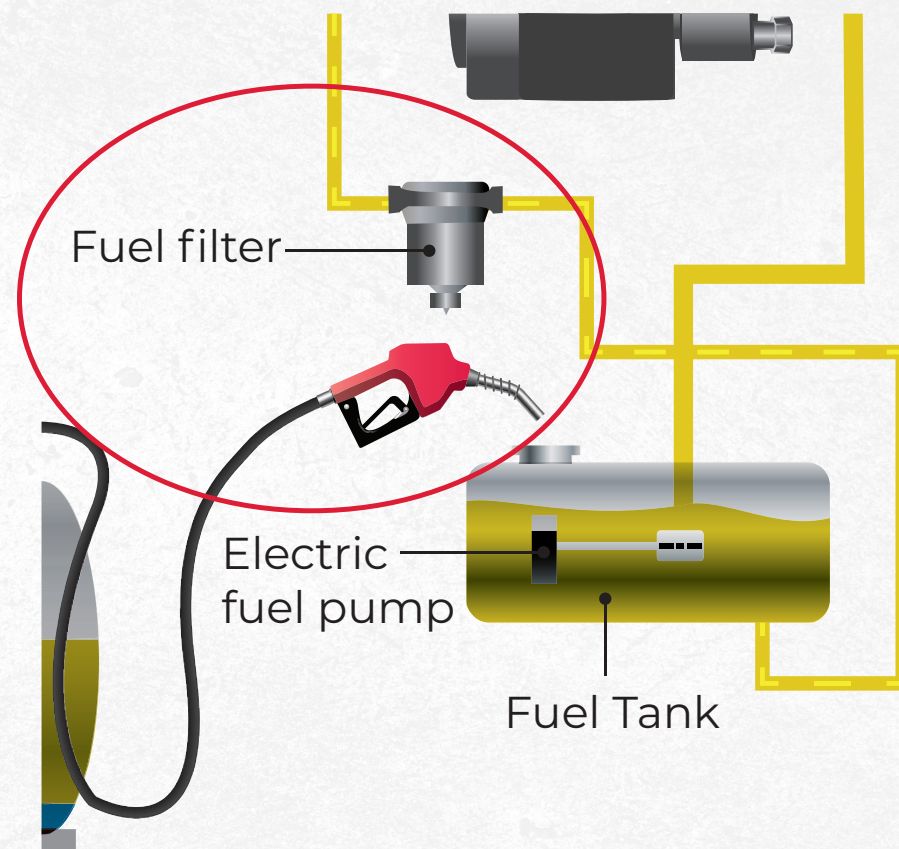
DIESELEX GOLD BENEFITS

Extends filter life

Controlling condensation

Dispersing particles

Improved fuel and biodiesel stability



ENGINEERED TO BE THE BEST

Dieselex[®] Gold

HIGH PRESSURE PUMP



HIGH PRESSURE PUMP CHALLENGES

Pressurizes fuel

Tight tolerances

Moving parts

Corrosion

Wear

DIESELEX GOLD BENEFITS

Thermal and oxidative stability

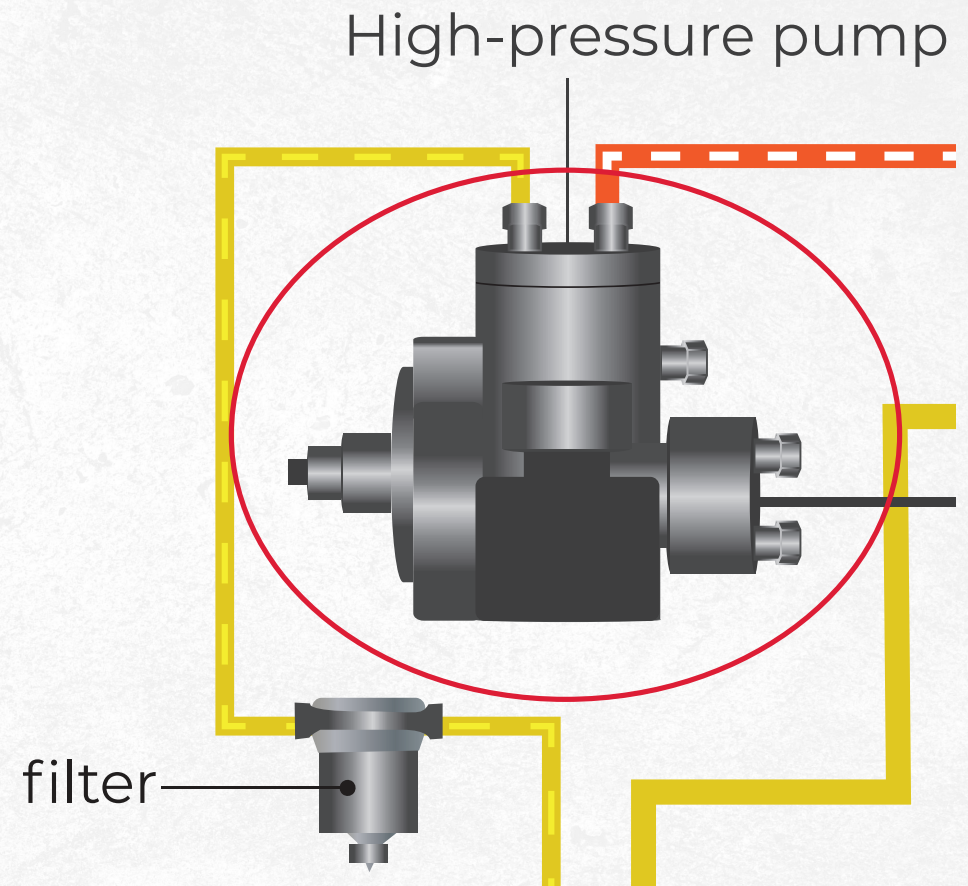
Added corrosion inhibitor

Disperses particles

Additional lubrication

Reduces wear

Prolongs pump life



ENGINEERED TO BE THE BEST

Dieselex[®] Gold

COMMON RAIL FUEL INJECTORS

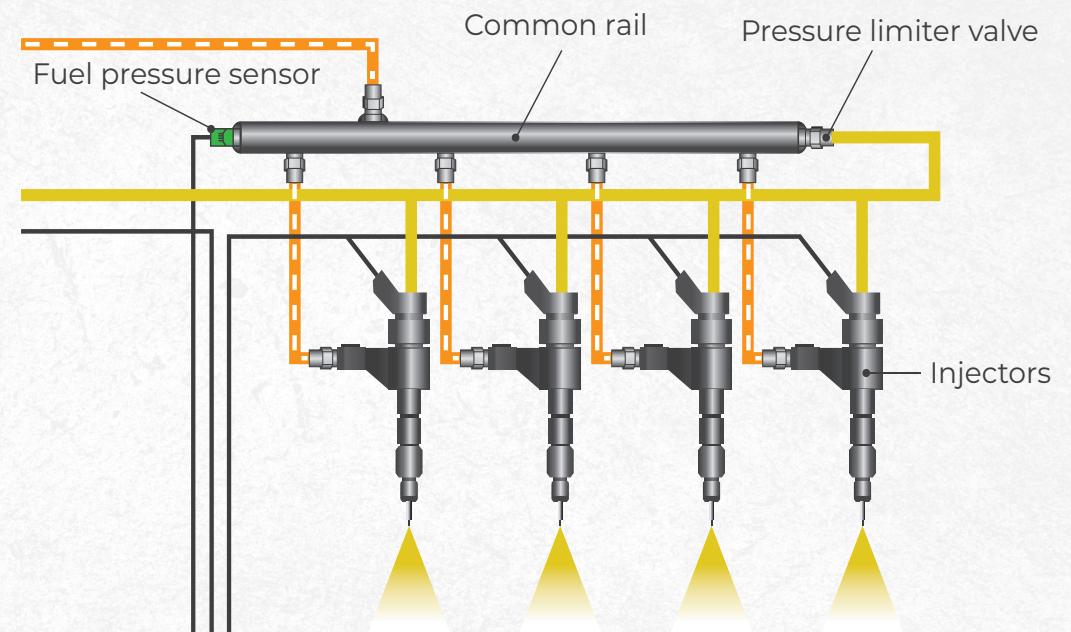


COMMON RAIL/FUEL INJECTORS

Stressed fuel returned	Moving parts
Tight tolerances	Wear
Rough running equipment	Fuel delivery
Deposit formation/sticking	

DIESELEX GOLD BENEFITS

Protection from thermal breakdown
Protection from oxidative breakdown
Enhanced corrosion resistance
Improved lubricity
Dispersion of particles
Inhibits / cleans up deposits that cause blocking and sticking



ENGINEERED TO BE THE BEST

Dieselelex[®] Gold

COMBUSTION

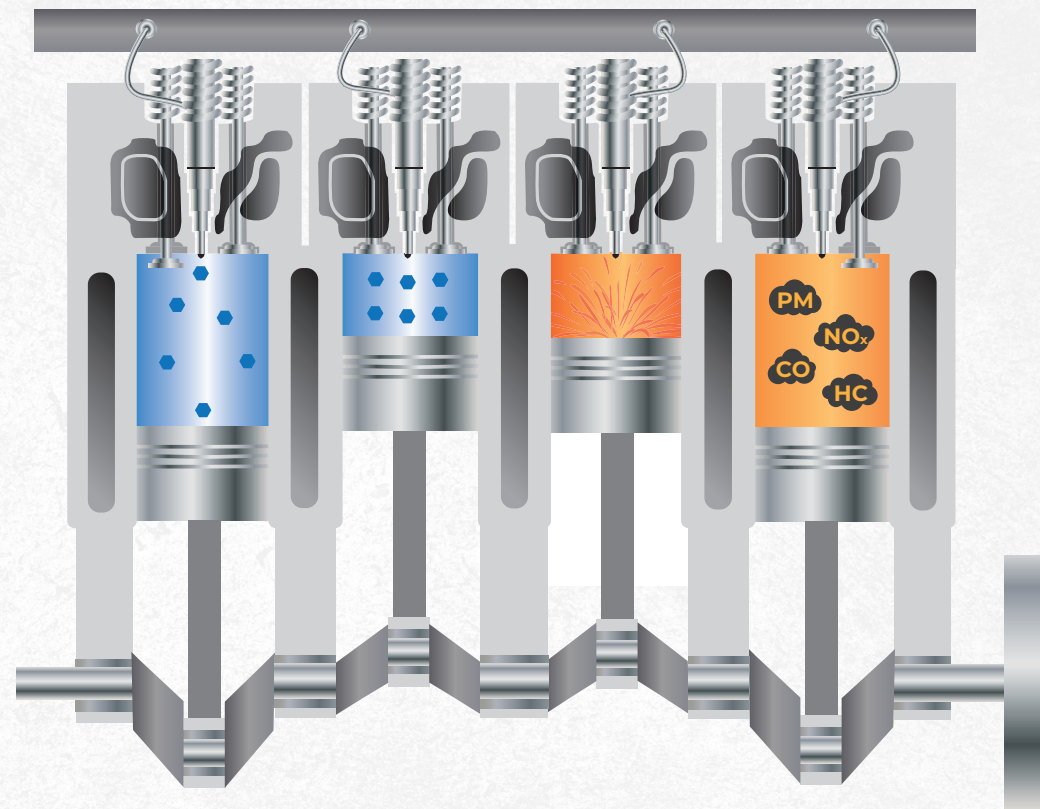


COMBUSTION CHALLENGES

Deposit buildup	Abnormal combustion
Low cetane	Engine knock
Ignition lag	Vibration
Uneven thrust on piston and cylinder	

DIESELEX GOLD BENEFITS

Improved efficiency	Quicker starts
Keeps deposits from forming	
Cleans-up deposits	
Quieter operation	
Smoother operation	
Complete combustion	



ENGINEERED TO BE THE BEST

Dieselelex[®] Gold

EXHAUST/ AFTERTREATMENT

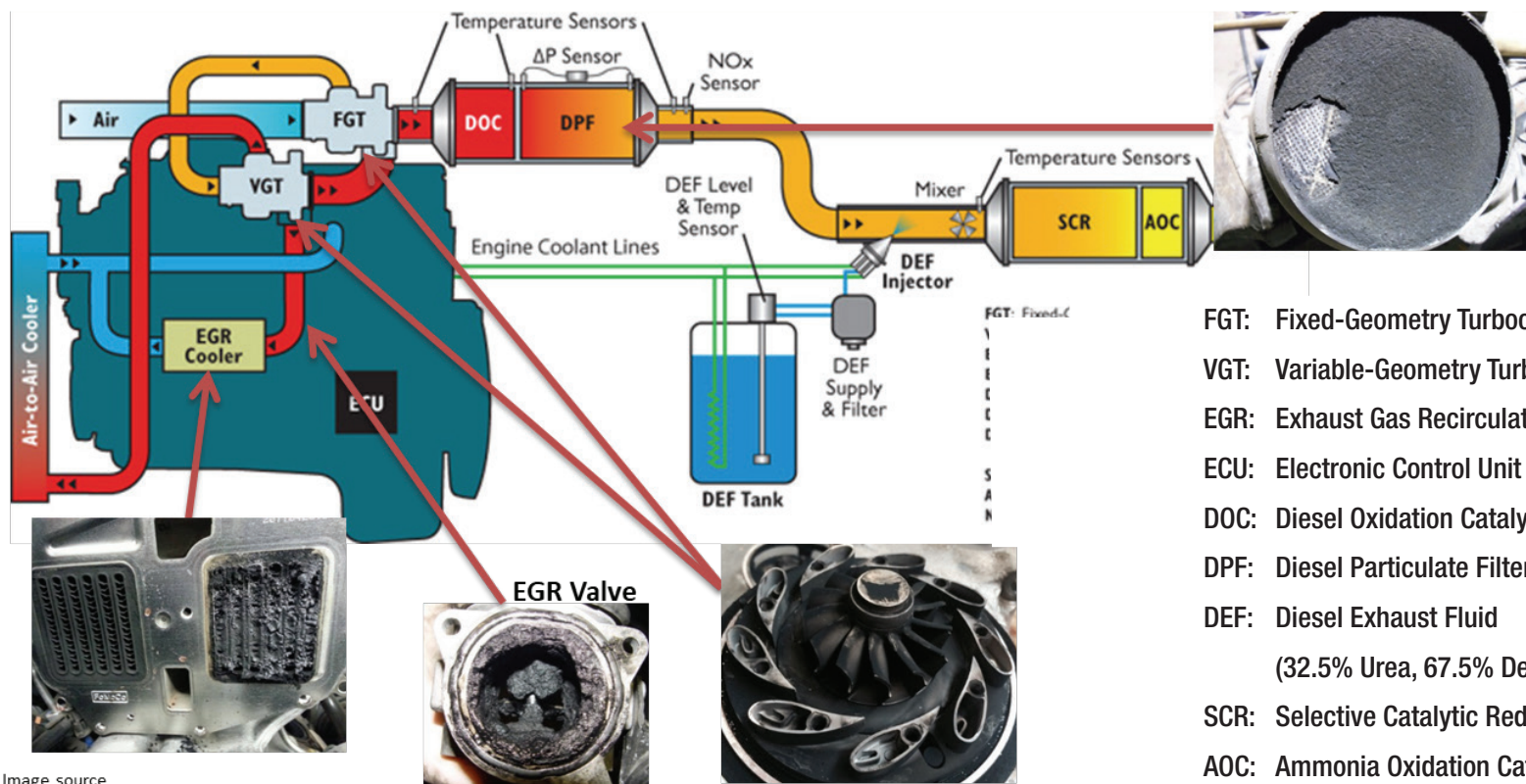


Image source
<http://igpenenergy.com/background/pm-2-5/>

- FGT: Fixed-Geometry Turbocharger
- VGT: Variable-Geometry Turbocharger
- EGR: Exhaust Gas Recirculation
- ECU: Electronic Control Unit
- DOC: Diesel Oxidation Catalyst
- DPF: Diesel Particulate Filter
- DEF: Diesel Exhaust Fluid
(32.5% Urea, 67.5% Deionized Water)
- SCR: Selective Catalytic Reduction
- AOC: Ammonia Oxidation Catalyst
- NOx: Nitrogen Oxides

ENGINEERED TO BE THE BEST

Dieselelex[®] Gold

EXHAUST/ AFTERTREATMENT



EXHAUST / AFTERTREATMENT

Hydrocarbons

Particulate matter

Carbon monoxide

NOx

DIESELEX GOLD BENEFITS

Reduction in all emissions

Significantly reduces Soot Loading on exhaust system

Minimizes loading on EGR/DPF system

Fewer and more complete DPF regens



ENGINEERED TO BE THE BEST

Dieselelex[®] Gold

Dieselelex[®] Gold

THE DIESELEX GOLD DIFFERENCE

- **Protection for the entire fuel system**
- **Cleans up deposits left by typical ULSD**
- **Keeps engines clean**
- **Quicker starts/less cold cranking**
- **Improved combustion**
- **Quieter/smooth operation**
- **Optimized fuel economy**
- **Optimum power**
- **Reduction in emissions**
- **Less unexpected downtime**
- **Improved overall performance**